

Preservation

sub-zero

Biomedical Freezers

Panasonic Biomedical Freezers offer the outstanding reliability and performance required in a wide variety of storage and research applications.



MDF-U443

Upright type

Powerful fan ensures temperature uniformity throughout the freezer cabinet.
Forced air circulation & auto defrost

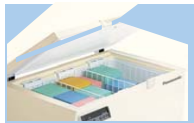
- High freezing power increases temperature uniformity
- Auto defrost for easy maintenance



Effective capacity:
MDF-U443 426 liters
 (15.0 cu.ft.)

Safety Features

- Alarm & Recording System
- High/low temperature alarm
- Power failure alarm
- Remote alarm contact
- Self diagnostics function. Should an abnormality be picked up, an error code will be displayed in red figures.
- Breaker switch turns power off in event of over current abnormality.
- Balance hinges keep the lid open in any position to make this chest freezer easier to use. This means you have both hands free to work. (chest type)



position to make this chest freezer easier to use. This means you have both hands free to work. (chest type)

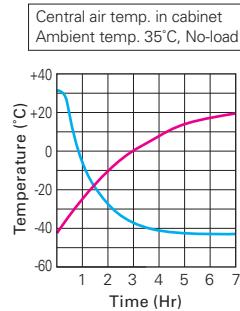
Specifications

Model No.	MDF-U443
Exterior dimensions (W x D x H)	800 x 832 x 1810 (mm) 31.5 x 32.8 x 71.3 (inch)
Interior dimensions (W x D x H)	640 x 615 x 1090 (mm) 25.2 x 24.2 x 42.9 (inch)
Capacity	426L (15.0 cu. ft.)
Cooling performance	-40°C (AT: 35°C, no load)
Control range	-15°C to -40°C
Baskets	—
Access ports	40mm diameter, left-hand side
Compressor	Hermetic, 400W/750W
Refrigerant	HFC
Alarm system	<ul style="list-style-type: none"> • High/low temperature alarm (SV ±5°C to ±20°C adjustable) • Power failure • Filter clogging • Remote alarm contact • Battery/fanmotor replacement notification
Calibration	—
Options	Temperature recorder (MTR-85H-PW, MTR-4015LH-PE), Panasonic DAQ system

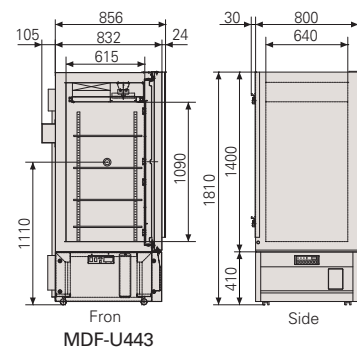
Panasonic's MDF Series Biomedical Freezers offer the outstanding reliability and performance required in a wide variety of storage and research applications. In the medical field, they provide effective storage of life-saving fresh and frozen blood supplies and vaccines, as well as samples for diagnosis. In the biotechnology field, they provide effective storage of enzymes for genetic research, as well as culture media, reagents and samples for testing. In the industrial field, they are ideal for aging and temperature tests on electronic components, precision devices, and compound resins. As a storage environment, with excellent safety features, easy operability, and a host of other features, these freezers offer unsurpassed reliability and functionality. If you are looking for precision temperature controlled storage equipment, look to Panasonic.

Performance Data

- Pull-down characteristics
- Pull-up characteristics during power failure



Dimensions



- Secure lock safeguards the contents of the freezer and keeps hazardous items out of harm's way.



Newly designed lid lock (chest type, except MDF-436).

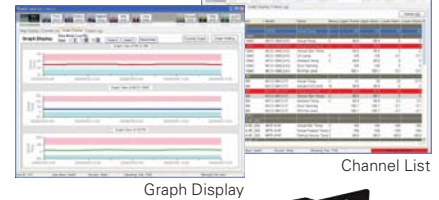
- Door latch can accommodate a pad lock for added protection of valuable samples. (upright type)
- Part replacement notification



Temperature Monitoring Features (optional)

Panasonic Data Acquisition (DAQ) System enables remote monitoring of Panasonic biomedical freezers.

Panasonic Data Acquisition Software
 MTR-5000-PW



Ethernet (LAN) Interface
 MTR-L03-PW



Options

Storage Baskets



For MDF-137/237
MDF-13B2-PW (set of two)
MDF-13B3-PW (set of three)

Outer dimensions: 255(W) x 420(D) x 205(H)mm
 Inner dimensions: 210(W) x 370(D) x 200(H)mm



For MDF-436
MDF-43B2-PW (set of two)
MDF-43B3-PW (set of three)

Outer dimensions: 275(W) x 530(D) x 205(H)mm
 Inner dimensions: 230(W) x 480(D) x 200(H)mm

Temperature Recorders



MTR-685-PE (except MDF-U443) -100°C to +40°C

- Mounting kit for chest: MDF-S740-PW
- Mounting kit for MDF-U5312 and MDF-U537D (lower room): MPR-S7-PW
- External mounting kit for MDF-U5333 and MDF-U537D (upper room): MDF-S740T-PW
- Recording paper: RP-G85-PW
- Recording pen: PG-R-PW

MTR-85H-PW

(for MDF-U443 only)

- -100°C to +50°C
- Recording paper: RP-85-PW
- Recording pen: DF-38FP-PW



Panasonic DAQ system

Data acquisition software
MTR-5000-PW/Ethernet (LAN)
 Interface **MTR-L03-PW** or
 RS232C/RS485 Interface
MTR-480-PW



Panasonic Healthcare Co., Ltd., Gunma Factory is certified for:
Quality management system: ISO9001
Medical devices quality management system: ISO13485



Panasonic Healthcare Co., Ltd., Gunma Factory is certified for:
Environmental management system: ISO14001

DISTRIBUTED BY:



PT. SIGMA BIMED
 Indonesia Sole Distributor

Jl. Agung Utara Raya Blok A 36D/42 Sunter Agung Jakarta Utara 14350 Indonesia

Telp. (62-21) 64716568, 70240088, 70240099, 87960123, 87960456

Fax. (62-21) 64716568, 87961123, 87961456

Email : sigmabimed@indo.net.id, sales@sigmabimed.com

Website : www.sigmabimed.com
 kemenkes RI AKL

Panasonic

Panasonic Healthcare Co., Ltd (Gunma Site-Biokiki Seizou Group)

1-1-1 Sakata Oizumi-Machi, Ora-Gun, Gunma 370-0596, Japan
 Copyright Panasonic Healthcare Co., Ltd.

Melalui Scimed (Asia) Pte., Ltd. Singapore