



PT. SIGMA BIMED



Refrigerator | Freezer | Open Showcase
Kitchen Refrigerator & Freezer | Super Showcase | Coldroom | Condensing Unit
Condenser | Cooling Coil | Semi-Hermetic Compressor
Ice Maker & Blast Freezer

Refrigerator

BEVERAGE COOLER

Panasonic

SBC-CD1BID



SBC-CD2BID



SBC-CD3BID



Specification

SBC-CD1BID
Capacity: **460 liter** | Int. Dimension (WxDxH): **487x620x1575 mm**
Ext. Dimension (WxDxH): **577x767x2061 mm** | Inside Temperature: **30°C** | Electrical: **220V - 240V/50Hz** | Weight: **100 Kg** | Lamp: **LED (Interior):8Wx1(6400K)** | Temperature Control: **Electromechanical Thermostat**

SBC-CD2BID
Capacity: **1060 liter** | Int. Dimension (WxDxH): **1095x620x1575 mm**
Ext. Dimension (WxDxH): **1185x767x2061 mm** | Inside Temperature: **30°C** | Electrical: **220V - 240V/50Hz** | Weight: **180 Kg** | Lamp: **LED (Interior):18Wx1(6400K)** | Temperature Control: **Electromechanical Thermostat**

SBC-CD3BID
Capacity: **1635 liter** | Int. Dimension (WxDxH): **1675x620x1575 mm**
Ext. Dimension (WxDxH): **1765x767x2061 mm** | Inside Temperature: **30°C** | Electrical: **220V - 240V/50Hz** | Weight: **230 Kg** | Lamp: **LED (Interior):18Wx2(4000K)** | Temperature Control: **Electromechanical Thermostat**

Feature



Digital Thermostat



Adjustable Self Height



Automatic Door Closed



Double Fan Circulation



Lighting Display



New Electric Part Box



Caster Wheel

Beverage Cooler

SBC-P189KCD | SMR-PT330A
Inside temperature 0°C to 10°C



Double Glasses Door



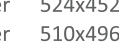
New Front Panel



Adjustable self height



Automatic Door Closed



Defogger



Key Lock



Lighting Display



Caster Wheel



Air Flow



Sliding Deck*

Beer Cooler

SBC-PF330THWR
Inside Temperature 0°C to -5°C



Low-E Double Glasses Door



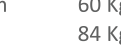
Digital Thermostat



Adjustable self height



Lighting Display



Defogger



Key Lock



Caster Wheel

Wine Cooler

SBC-P245K | SBC-P729K | SBC-P929K
Inside Temperature 5°C to 16°C



Key Lock

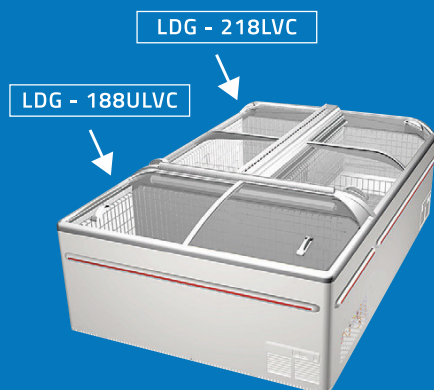
Model	Capacity	Int.Dimension (WxDxH)	Ext.Dimension(WxDxH)	Weight	Lamp	Temp.Control
SBC-P189KCD	201 liter	524x452x900 mm	600x580x1273,5 mm	60 Kg	LED 3W	Electronic Thermostat
SMR-PT330A	330 liter	510x496x1330 mm	600x642x1795 mm	84 Kg	LED 6W	Thermostat
SBC-PF330THWR	330 liter	510x496x1330 mm	600x638x2006 mm	80 Kg	Flourescent 36Wx1	Dig Thermostat
SBC-P245K	105 liter	390x440x715 mm	472x630x850 mm	40 Kg	Incandescent 15 Wx1	Electronic Thermostat
SBC-P729K	248 liter	520x440x1107 mm	600x580x1495 mm	65 Kg	Flourescent 10 Wx1	Electronic Thermostat
SBC-P929K	330 liter	520x490x1332 mm	600x630x1732 mm	75.5 Kg	Flourescent 10 Wx1	Electronic Thermostat

* Electrical : 220-240V/50Hz

*All product model, type and specification may change without notice.

Freezer ISLAND FREEZER LDG SERIES

Panasonic



Specification

LDG - 188ULVC Capacity: **634 liter** | Ext.dimension (LxWxH): **1850x868x890 mm**
 Inside Temperature: **-18°C to -22°C** | Electrical: **220-240V/50Hz**
 Lamp: **36 Wx2** | Temperature Control: **Automatic Temp.Control**

LDG - 218LVC Capacity: **762 liter** | Ext.dimension (LxWxH): **2105x868x890/780 mm**
 Inside Temperature: **-22°C to -18°C** | Electrical: **220-240V/50Hz**
 Lamp: **30 Wx2** | Temperature Control: **Automatic Temp.Control**

Hard Top Lid & Glass Slide Door

SF-PC1497 Inside Temperature (-20°C)
 SF-PC1497ST Inside Temperature (-18°C)



Upright Freezer

SRL-CD4075(E)-L
 Inside temperature (-20°C)
 (AT30°C, without direct sunlight)



Upright Freezer

SRL-U2075H
 Inside temperature (-18°C to -22°C)
 SRL-U4075H
 Inside temperature (-20°C to -18°C)



Model	Capacity	Int.Dimension (WxDxH)	Ext.Dimension (WxDxH)	Weight	Lamp	Temp. Control
SF-PC1497	382 liter	1180x500x698 mm	1335x747x945 mm	74 Kg	15W	Thermostat
SF-PC1497ST	369 liter	1180x500x698 mm	1335x678x892 mm	71 Kg	-	Thermostat
SRL-CD4075(E)-L	637 liter	1096x427(Shelf)x1394 mm	1216x849x1900 mm	249 Kg	-	Auto.Thermostat
SRL-U2075H	285 liter	488x427x1394 mm	608x799x1900 mm	150 Kg	-	Dig.Thermostat
SRL-U4075H	637 liter	1096x427x1394 mma	1216x799x1900 mm	239 Kg	-	Dig.Thermostat

* Electrical : 220-240V/50Hz

*All product model, type and specification may change without notice.

Open Showcase INVERTER TYPE

Panasonic



**Inverter Control
(Compressor)**

SAR-CDV390ID



SAR-CDV490ID



SAR-CDV690ID



Specification

SAR-CDV390 ID	Capacity: 367 liter Int. Dimension (WxDxH): 856x300(shelf)x1338 mm Ext. Dimension (WxDxH): 890x660x1900 Inside Temperature: 15°C ~ 25°C Electrical: 220V - 50Hz Weight: 175 Kg Lamp: DC24V LED LAMP 14Wx1 Temperature Control: Digital Thermostat
SAR-CDV490 ID	Capacity: 493 liter Int. Dimension (WxDxH): 1156x300(shelf)x1338 mm Ext. Dimension (WxDxH): 1190x660x1900 mm Inside Temperature: 15°C ~ 25°C Electrical: 220V - 50Hz Weight: 210 Kg Lamp: DC24V LED LAMP 19Wx1 Temperature Control: Digital Thermostat
SAR-CDV690 ID	Capacity: 754 liter Int. Dimension (WxDxH): 1756x300(shelf)x1338 mm Ext. Dimension (WxDxH): 1790x660x1900 mm Inside Temperature: 15°C ~ 25°C Electrical: 220V - 50Hz Weight: 285 Kg Lamp: DC24V LED LAMP 14Wx2 Temperature Control: Digital Thermostat

Feature



Open Showcase

SAR -263V(E) (5°C to 10°C)
SAR-CD361-C (ID) (0°C + 7.2°C)
SAR-675(E) (3°C to 7°C)



Model	Capacity	Ext.Dimension (WxDxH)	Temperature	Weight	Lamp	Temp.Control
SAR-263V(E)	173 liter	750x600x1496 mm	5°C to 10°C	136 Kg	LED 18W	Auto.Thermostat
SAR-CD361-C (ID)	360 liter	967x705(+25)x1900 mm	0°C + 7.2°C	251 Kg	LED 18W/6400Kx1	Auto.Thermostat
SAR-675(E)	792 liter	1879x774x1900 mm	3°C to 7°C	320 Kg	LED 60W	Auto.Thermostat

* Electrical : 220V/50Hz

*All product model, type and specification may change without notice.

Kitchen Refrigerator & Freezer Panasonic

Upright Series

Upright Refrigerator: SRR-781HP(E) | SRR-1281HP(E) | SRR-1581HP(E) | SRR-1881HP(E)

Upright Freezer: SRF-781HP(E) | SRF-1281HP(E) | SRF-1581HP(E) | SRF-1881HP(E)



Model	Int.Dimension (WxDxH)	Ext.Dimension (WxDxH)	Temp.range	Capacity	Weight
SRR-781HP(E)	609x682x1514 mm	745x800x2000 mm	-6°C to 12°C	610 liter	104 Kg
SRR-1281HP(E)	1074x682x1514 mm	1210x800x2000 mm	-6°C to 12°C	1080 liter	131 Kg
SRR-1581HP(E)	1324x682x1514 mm	1460x800x2000 mm	-6°C to 12°C	1329 liter	148 Kg
SRR-1881HP(E)	1664x682x1514 mm	1800x800x2000 mm	-6°C to 12°C	1667 liter	181 Kg
SRF-781HP(E)	609x682x1514 mm	745x800x2000 mm	-25°C to -15°C	598 liter	104 Kg
SRF-1281HP(E)	1074x682x1514 mm	1210x800x2000 mm	-25°C to -15°C	1080 liter	131 Kg
SRF-1581HP(E)	1324x682x1514 mm	1460x800x2000 mm	-25°C to -15°C	1312 liter	148 Kg
SRF-1881HP(E)	1664x682x 1514 mm	1800x800x2000 mm	-25°C to -15°C	1667 liter	181 Kg

*Power Supply : 220-240V/50Hz *Electrical : 220-240V/50Hz

Under Counter Series

Under Counter Refrigerator: SUR-1271 HP(E) | SUR-1571 HP(E) | SUR-1871 HP(E)

Under Counter Freezer: SUF-1271 HP(E) | SUF-1571 HP(E) | SUF-1871 HP(E)



Model	Int.Dimension (WxDxH)	Ext.Dimension (WxDxH)	Temp.range	Capacity	Weight
SUR-1271 HP(E)	794x587x573 mm	1200x750x800 mm	-6°C to 12°C	280 liter	84 Kg
SUR-1571 HP(E)	1094x587x573 mm	1500x750x800 mm	-6°C to 12°C	393 liter	95 Kg
SUR-1871 HP(E)	1394x587x573 mm	1800x750x800 mm	-6°C to 12°C	495 liter	110 Kg
SUF-1271 HP(E)	794x587x573 mm	1200x750x800 mm	-25°C to -15°C	280 liter	84 Kg
SUF-1571 HP(E)	1094x587x573 mm	1500x750x800 mm	-25°C to -15°C	393 liter	105 Kg
SUF-1871 HP(E)	1394x587x573 mm	1800x750x800 mm	-25°C to -15°C	495 liter	120 Kg

*Power Supply : 220-240V/50Hz *Electrical : 220-240V/50Hz

*All product model, type and specification may change without notice.

Super Showcase

Panasonic

Multi-deck Showcase

Dairy Product & Dairy (Fresh) (3°C to 7 °C)

Remote Type



Width : 1080 mm ; Height : 2000 mm	
Handrail Height: 450 mm	
Model	Length
CPW-EXC064(E)	1875 mm
CPW-EXC084(E)	2500 mm
CPW-EXC024(E)	3750 mm

Multi-deck Showcase

Fish & Meat (-2°C to 2 °C)

Remote Type



Width : 1080 mm ; Height : 2000 mm	
Handrail Height: 450 mm	
Model	Length
FPW-EXC064 (E)	1875 mm
FPW-EXC084 (E)	2500 mm
FPW-EXC024 (E)	3750 mm

Dual Type Freezer Showcase

Frozen Foods (-22°C to -18 °C)

Remote Type, Combined Cabined

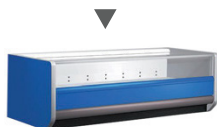


Width : 1110 mm ; Height : 2000 mm	
Height Of The Bottom Compartment: 790 mm	
Model	Length
CZR-EXC067 (E)	1875 mm
CZR-EXC087 (E)	2500 mm

Island Freezer Showcase

Frozen Foods (-22°C to -18 °C)

Remote Type



Width : 1080 mm ; Height : 790 mm	
Loaded depth: 260 mm	
Model	Length
CZM-EXC067 (E)	1875 mm
CZM-EXC087 (E)	2500 mm
CZM-EXC027 (E)	3750 mm

Semi-Multi-Deck Showcase

Fish & Meat (-2°C to 2 °C)

Remote Type



Width : 1080 mm ; Height : 1350 mm	
Handrail Height: 550 mm	
Model	Length
FPS-EXC3065 (E)	1875 mm
FPS-EXC3085 (E)	2500 mm
FPS-EXC3025 (E)	3750 mm

Island Showcase

Fish & Meat (-2°C to 2°C)

Remote Type



Width : 1080 mm ; Height : 930 mm	
Handrail Height: 750 mm Loaded depth: 216 mm	
Model	Length
CSM-EXC067 (E)	1875 mm
CSM-EXC087 (E)	2500 mm
CSM-EXC027 (E)	3750 mm

Semi-multi-deck Showcase

Dairy Product & Dairy (Fresh)
(3°C to 7 °C)

Remote Type



Width : 1080 mm ; Height : 1500 mm		Width : 1080 mm ; Height : 1700 mm	
Handrail Height: 450 mm		Handrail Height: 450 mm	
Model	Length	Model	Length
CPS-EXC5064 (E)	1875 mm	CPS-EXC7064 (E)	1875 mm
CPS-EXC5084 (E)	2500 mm	CPS-EXC7084 (E)	2500 mm
CPS-EXC5024 (E)	3750 mm	CPS-EXC7024 (E)	3750 mm

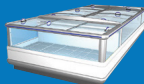
Super Showcase

Panasonic

Island Freezer Showcase

Frozen Foods (-22°C to -18°C)

Remote Type Sliding Side Way Glass Doors ▶



Width: **1800 mm**; Handrail Height: **930 mm**

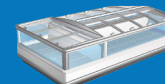
Loaded depth: **370 mm**

Model	Length
TVQ-EXC069KFSD (E)	1875 mm
TVQ-EXC089KFSD (E)	2500 mm
TVQ-EXC029KFSD (E)	3750 mm
TVQ-EXCCKFSD (E)	1800 mm (end case)

Island Freezer Showcase

Frozen Foods (-22°C to -18°C)

Remote Type Sliding Up Glass Doors ▶



Width: **1800 mm**; Handrail Height: **935 mm**

Loaded depth: **370 mm**

Model	Length
TVQ-EXC069KFVSD(SE)	1875 mm
TVQ-EXC089KFVSD(SE)	2500 mm
TVQ-EXC029KFVSD(SE)	3750 mm
TVQ-EXCCKFSD (E)	1800 mm (end case)

Island Freezer Showcase

Frozen Foods (-22°C to -18°C)

Remote Type ▶



Width: **1800 mm**; Handrail Height: **900 mm**

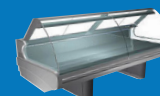
Loaded depth: **370 mm**

Model	Length
TVQ-EXC069KF (E)	1875 mm
TVQ-EXC089KF (E)	2500 mm
TVQ-EXC029KF (E)	3750 mm

Serve Over Showcase

Fish & Meat (-1°C to 5°C)

Remote Type
Flip-up curved glass ▶



Width: **1150 mm**; Height: **1210 mm**

Working area height: **845 mm**

Model	Length
FAM-BD3G (E)	1210 mm
FAM-BD6G (E)	1875 mm
FAM-BD8G (E)	2500 mm
FAM-BD2G (E)	3750 mm

Serve Over Showcase

Cooked Food & Processed Goods
(60°C to 65°C)

Flip-up curved glass ▶



Width: **1150 mm**; Height: **1210 mm**

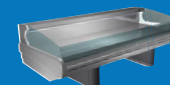
Working area height: **845 mm**

Water-heat type		Dry-heat type	
Model	Length	Model	Length
FAM-BD6GHW (E)	1875 mm	FAM-BD6GHD (E)	1875 mm
FAM-BD2GHW (E)	3750 mm	FAM-BD8GHD (E)	2500 mm
		FAM-BD8GHD (E)	3750 mm

Serve Over Showcase

Fish & Meat (-1°C to 5°C)

Remote Type ▶



Width: **1150 mm**; Height: **845 mm**

Working area height: **845 mm**

Model	Length
FAM-BD6G (E)	1875 mm
FAM-BD8G (E)	2500 mm
FAM-BD2G (E)	3750 mm

Serve Over Showcase

Fish & Meat (-1°C to 5°C)

- Build-in type
- 50Hz Only

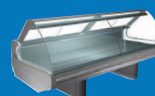


Width: 1150 mm ; Height: 845 mm	
Refrigerant ;R404A	
Defrost Type : Electric heating	
Working area height: 845 mm	
Model: FAM-BD6GPI (E)	Length: 1875 mm
Power Consumption	
Operating : 852W (220V), Defrosting: 500W (220V)	
Lighting: 42W (External, Optional)	
Model: FAM-BD8GPI (E)	Length: 2500 mm
Power Consumption	
Operating : 924W (220V), Defrosting: 750W (220V)	
Lighting: 56W (External, Optional)	

Serve Over Showcase

Fish & Meat
(-1°C to 5°C)

- Build-in type
- 50Hz Only



Width: 1150 mm ; Height: 1210 mm	
Refrigerant ;R404A	
Defrost Type : Electric heating	
Working area height: 845 mm	
Model: FAM-BD6GPI (E)	Length: 1875 mm
Power Consumption	
Operating : 806W (220V), Defrosting: 500W (220V)	
Lighting: 60W (Internal), 42W (External, Optional)	
Model: FAM-BD8GPI (E)	Length: 2500 mm
Power Consumption	
Operating : 851W (220V), Defrosting: 750W (220V)	
Lighting: 72W (Internal), 56W (External, Optional)	

Cold Room CHILLER & FREEZER

Panasonic

Walk in Cold Room & Freezing Room

Custom Dimension : Please Contact Us For Inquiry



Model	Unit Indoor/Outdoor	Aplicable Temp.	Cooling Space (m ³)	Weight
PCU - CSN100MG (E)	PCU - CSN150ME (E) PCU - CSN100MG (E)	-5°C to +18°C	7-10	Indoor Unit: 14 Kg Outdoor Unit: 33 Kg
PCU - CSN150MG (E)	PCU - CSN150ME (E) PCU - CSN150MU (E)		7-16	Indoor Unit: 14 Kg Outdoor Unit: 38 Kg
PCU - CSN200MG (E)	PCU - CSN300MEC(E) PCU - CSN200MUC(E)		10-22	Indoor Unit: 31 Kg Outdoor Unit: 72 Kg
PCU - CSN300MG (E)	PCU - CSN350ME(E) PCU - CSN300MU(E)		7-17	Indoor Unit: 30 Kg Outdoor Unit: 72 Kg
PCU - CSN200L(E)	PCU - CSN200LEC(E) PCU - CSN200LUC(E)	-25°C to +5°C	7-17	Indoor Unit: 23 Kg Outdoor Unit: 72 Kg
PCU - CSN300L(E)	PCU - CSN350ME(E) PCU - CSN300MU(E)		7-12	Indoor Unit: 24 Kg Outdoor Unit: 72 Kg

**All product model, type and specification may change without notice.*

Condensing Unit OCU | LCU | MCF

Panasonic

Outdoor Condensing Unit

OCU-NR300SF | OCU-NS400HF
OCU-NS500HF | OCU-NS600HF
OCU-NS600VSFJ | OCU-NS800VSFJ



Semi-Hermetic Compressor Unit

LCU-N32PJ-A | LCU-N52PJ-A
LCU-N72PJ-A



Semi-Hermetic Tandem Compressor Unit

MCF-N101PJ-A | MCF-N151PJ-A
MCF-N200PJ-A | MCF-N300PJ-A
MCF-N400PJ-A | LCU-N701LMPJ
LCU-N701MPJ



Outdoor Condensing Unit

Model	Power Source For Utility Circuit	Refrigerant	Evap.Temp. Range	Nominal Output	Current	Maximum Load Current	Dimension (LxWxH)	Weight
OCU-NR300SF	3PH.220V-50Hz	R404A	-40°C to -5°C	5.06 kw	4.337 A	5.1 A	982x405x880 mm	87.5 Kg
OCU-NS400HF	3PH.380V-50Hz	R404A	-15°C to 10°C	3.0 kw	6.41 A	6.80 A	1008x425x950 mm	103 Kg
OCU-NS500HF	3PH.380V-50Hz	R404A	-15°C to 10°C	3.75 kw	8.16 A	11.2 A	1008x390x1250 mm	122 Kg
OCU-NS600HF	3PH.380V-50Hz	R404A	-15°C to 10°C	4.5 kw	9.70 A	12.46 A	1008x390x1250 mm	127 Kg
OCU-NS600VSFJ	3PH.380V-50Hz	R404A	-20°C to -5°C	4.5 kw	9.28 A	14.78 A	1142x605x1295 mm	162 Kg
OCU-NS800VSFJ	3PH.380V-50Hz	R404A	-45°C to -5°C	6 kw	14.2 A	22.8	1350x643x1295 mm	252 Kg

Semi-Hermetic Compressor Unit

Model	Evap.Temp. Range	Ambient Temp.	Nominal Output	Electrical System	Refrigerant	Dimension (LxWxH)	Weight
LCU-N32PJ-A	-40°C to -5°C	0°C to 40°C	2.2 kw	3Φ 380V 50Hz	R404A	780x590x608 mm	84 Kg
LCU-N52PJ-A	-40°C to -5°C	0°C to 40°C	3.7 kw	3Φ 380V 50Hz	R404A	850x506.5x813 mm	142 Kg
LCU-N72PJ-A	-40°C to -5°C	0°C to 40°C	5.5 kw	3Φ 380V 50Hz	R404A	861x506.5x813 mm	152 Kg

Semi-Hermetic Tandem Compressor Unit

Model	Power Source For Utility Circuit	Refrigerant	Evap.Temp. Range	Nominal Output	Current	Maximum Load Current	Dimension (LxWxH)	Weight
MCF-N101PJ-A	380V-50Hz	R404A	-40°C to -5°C	7.5 kW	24.88 A	27.25 A	1313x641x976 mm	320 Kg
MCF-N151PJ-A	380V-50Hz	R404A	-40°C to -5°C	11 kW	24.88 A	27.25 A	1313x641x976 mm	340 Kg
MCF-N200PJ-A	380V-50Hz	R404A	-40°C to -5°C	15 kW	36.38 A	35.10 A	1561x500x981 mm	560 Kg
MCF-N300PJ-A	380V-50Hz	R404A	-40°C to -5°C	21 kW	43.87 A	42.20 A	1561x500x981 mm	560 Kg
MCF-N400PJ-A	380V-50Hz	R404A	-40°C to -5°C	30 kW	68.48 A	66.00 A	1668x725x981 mm	620 Kg
LCU-N701LMPJ	380V-50Hz	R404A	-45°C to -20°C	54 kw	96A/20A	82.00 A	2365x1130x1670 mm*	1650 Kg
LCU-N701MPJ	380V-50Hz	R404A	-20°C to -5°C	54 kw	96A/20A	108.67 A	2365x1130x1670 mm*	1650 Kg

* Approx

*All product model, type and specification may change without notice.

Condenser

AIR COOLING CONDENSER | MCF SERIES

Panasonic

MCF-31NSJ | MCF-41NSJ | MCF-51NSJ | MCF-71NSJ
MCF-100NUJ | MCF-150NUJ | MCF-251NUJ



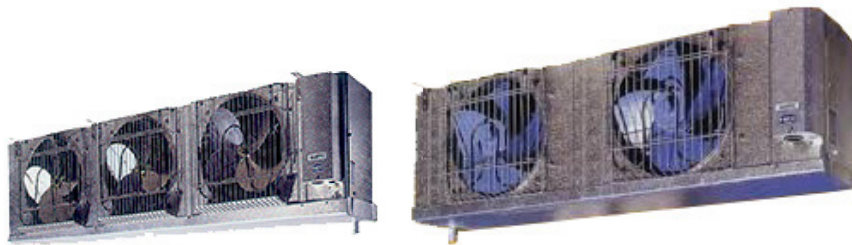
Model	Nominal Capacity	Power Source	Refrigerant	Evap.Temp. Range	Dimension (LxWxH)	Weight
MCF-31NSJ	7.2 kW	380V 50Hz	R-22,R404A	-40 to -5°C	673x393x653 mm	28 Kg
MCF-41NSJ	10.5 kW	380V 50Hz	R-22,R404A	-40 to -5°C	872x430x812 mm	36 Kg
MCF-51NSJ	14.7 kW	380V 50Hz	R-22,R404A	-40 to -5°C	856x631x858 mm	68 Kg
MCF-71NSJ	19.5 kW	380V 50Hz	R-22,R404A	-40 to -5°C	1307x631x858 mm	79 Kg
MCF-100NUJ	35 kW	380V 50Hz	R-22,R404A	-40 to -5°C	1350x620x1081 mm	130 Kg
MCF-150NUJ	50 kW	380V 50Hz	R-22,R404A	-40 to -5°C	1800x620x1081 mm	170 Kg
MCF-251NUJ	67 kW	380V 50Hz	R-22,R404A	-40 to -5°C	2431x964x1422 mm	306 Kg

Cooling Coil

CC-CV SERIES | CC-CD SERIES

Panasonic

CC-CV3000H | CC-CV9000H | CC-CV4000FH
CC-CD14000H | CC-CD4000LH | CC-CD9000LH



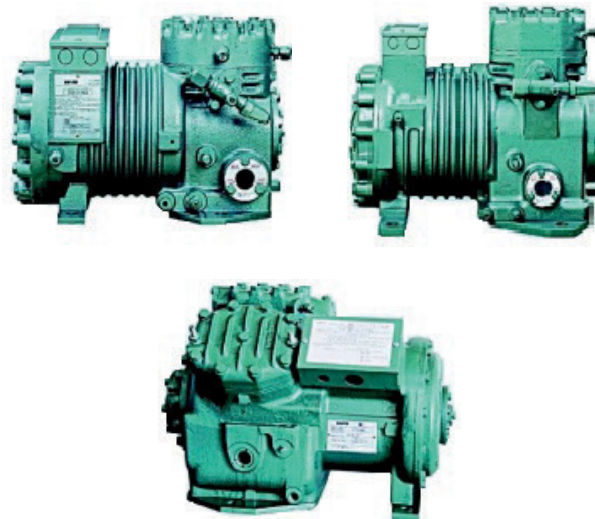
Model	Applicable Temp.	Weight
CC-CV3000H	-10°C to 3°C	24 Kg
CC-CV9000H	-10°C to 3°C	57 Kg
CC-CV4000FH	-35°C to -10°C	38 Kg
CC-CD14000H	-10°C to 3°C	72 Kg
CC-CD4000LH	-40°C to -10°C	36 Kg
CC-CD9000LH	-40°C to -10°C	70 Kg

Semi-Hermetic Compressor

Panasonic

CL SERIES

CL 1 | CL 2 | CL 3 Series



Series	Model	Hours Power	Refrigerant	Nominal Output	Evap.Temp. Range	Weight
CL 1	C-LN22M8A	3 HP	R404A	2.2 Kw	-45°C to +5°C	56.5 Kg
CL 2	C-LN28M8A	4 HP	R404A	2.8 Kw	-45°C to +5°C	90.0 Kg
CL 2	C-LN55M8A	7.5 HP	R404A	5.6 Kw	-45°C to +5°C	100 Kg
CL 3	C-LN75M81	10 HP	R404A	5.5 Kw	-45°C to +5°C	147.5 Kg
CL 3	C-LN105M81	15 HP	R404A	10.5 Kw	-45°C to +5°C	154.5 Kg
CL 3	C-LN150M81	20 HP	R404A	15.0 Kw	-45°C to +5°C	199.5 Kg

Ice Maker

Panasonic

Flaked Ice
SIM-F140
SIM-F140LA



Cubed Ice
SIM-S88U | SIM-S6500A | SIM-S7500A
SIM-S240YN-FYB | SIM-S41NB-FB2



Chipped Ice
SIM-C120L
SIM-C900N-FB2



Model	Type	Ice Making Capacity 1 day 24 Hours	Ice Storage	Dimension (WxDxH)	Weight
SIM-F140	Flaked Ice	130/150 Kg/day	28 Kg (19 kg when dropped naturally)	600x600x800 mm	65 Kg
SIM-F140 LA	Flaked Ice	30/150 kg/day	46 Kg (30 kg when dropped naturally)	900x600x800 mm	76 Kg
SIM-S88U	Cubed Ice	81/88 kg/day	38 Kg (28 kg when dropped naturally)	1004x600x800 mm	72 Kg
SIM-S6500A	Cubed Ice	73/76 kg/day	25 Kg (18 kg when dropped naturally)	630x500x850 mm	57 Kg
SIM-S7500UA	Cubed Ice	75/82 kg/day	38 Kg (28 kg when dropped naturally)	1004x600x800 mm	72 Kg
SIM-S240YN-FYB	Cubed Ice	230/245 Kg/day	110 Kg (100 kg when dropped naturally)	700x749x1880 mm	142 Kg
SIM-S241NB-FB2	Cubed Ice	235/245 Kg/day	240 Kg (210 kg when dropped naturally)	1087x862x1430 mm	163 Kg
SIM-C120L	Chipped Ice	110/120 Kg/day	68 Kg (45 kg when dropped naturally)	900x600x800 mm	76 Kg
SIM-C900N-FB2	Chipped Ice	840/900 Kg/day	240 Kg (210 kg when dropped naturally)	1086x862x1880 mm	305 Kg

*All product model, type and specification may change without notice.

Blast Freezer

Panasonic

Blast Freezer

BF-F120A | BF-FB120A | BYF-FBF783A





Model	Capacity	Ext.Dimension (WxDxH)	Weight
BF-F120A	403 liter	745x800x1800 mm	140 Kg
BF-FB120A	393 liter	745x800x1800 mm	140 Kg
BYF-FBF783A	403 liter	745x800x1800 mm	140 Kg

*All product model, type and specification may change without notice.

FOR FURTHER INFORMATION PLEASE CONTACT OUR SALES REPRESENTATIVE

HEAD OFFICE

Jl. Agung Utara Raya Blok A 36 D No. 42
Sunter Agung, Tanjung Priok
Jakarta Utara – 14350. Indonesia



 (+62-21) 87960123; 64716568
 +628111199915; 081386381171

SERVICE CENTER

Commercial Refrigerator and Freezer:

Phone : +628111140030
Email : service@sigmabimed.com

Biomedical and Laboratory equipment:

 0811 9721 1115
 Email : servicebio@sigmabimed.com

SOCIAL

 [ptsigmabimed](#)
 [Sigma.Bimed](#)
 **0811 9721 1115**
 sigmabimed.com

